

TAPLOW PARISH COUNCIL

Bee Squared



Creating more wildflower spaces in Taplow to support bees and other pollinators.



“BEE SQUARED” is an exciting new project from Taplow Parish Council. We invite you to join us in brightening up Taplow whilst helping our bees and other pollinators which have massively declined over the past 50 years. In Taplow, we are determined to stop this decline and help our wonderful natural friends.

DID YOU KNOW that 90% of bees in the UK are solitary bees? This means they don't have a hive to return to and in order to keep going, they need to 'refuel' via flowers every few metres. Solitary bees provide an essential pollination service. They pollinate our crops and ensure that plant communities are healthy and productive. Without them, mammals and birds would not have the seeds, berries or plants they depend on.

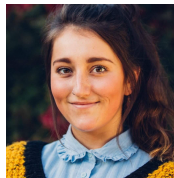
We'd love you to GET INVOLVED by planting your very own 'BEE SQUARE, a 1m x 1m wildflower, bee-friendly meadow'. During Autumn 2021 we will be distributing FREE packets of wildflower seeds to households in Taplow to encourage people to make a 'Bee Square' in their gardens.

PLANT YOUR FREE wildflower seeds in your front garden either in the ground or in a few large pots. Registration info below:

For more information contact:



Cllr Zoe Hatch
zoe.taplow.pc@gmail.com



Cllr Rachel Horton
rhorton.kitchlew@gmail.com



To register for your FREE seeds scan here:



or go to
www.taplowpc.org.uk

This project has been funded by Taplow Parish Council