

Key:

- Existing footway
- New footway buildout
- Existing grass verge to be converted to footway to accommodate shared usefootway
- Road markings

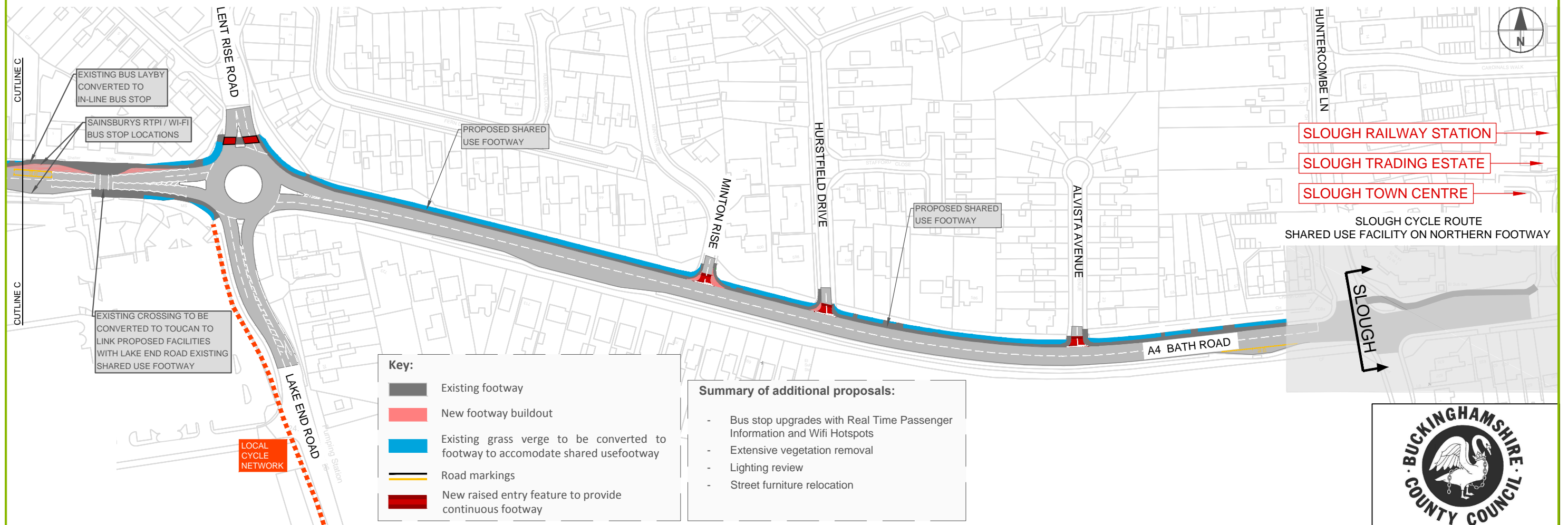
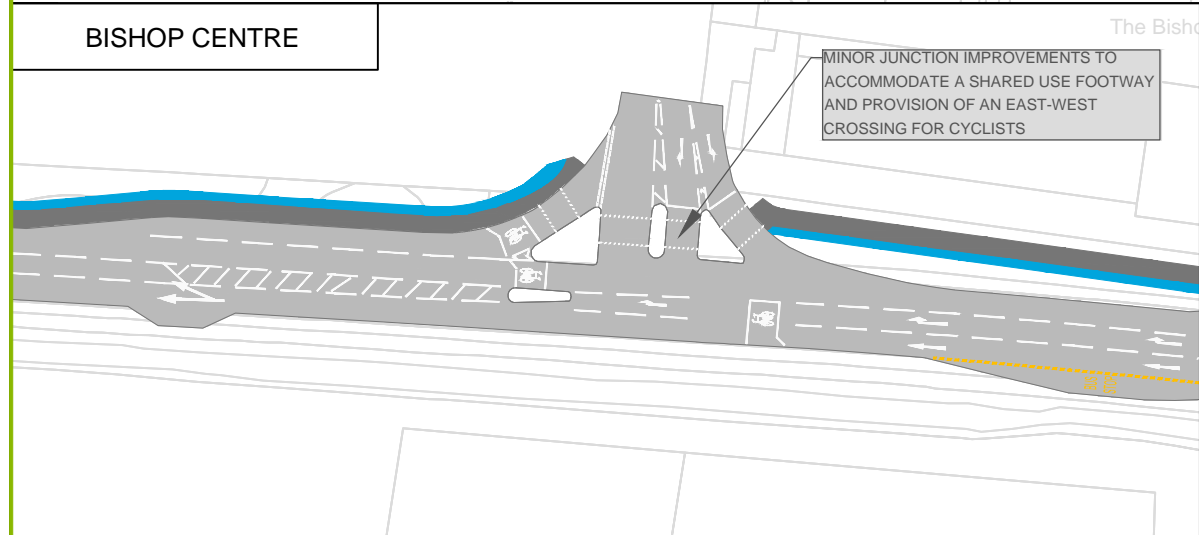
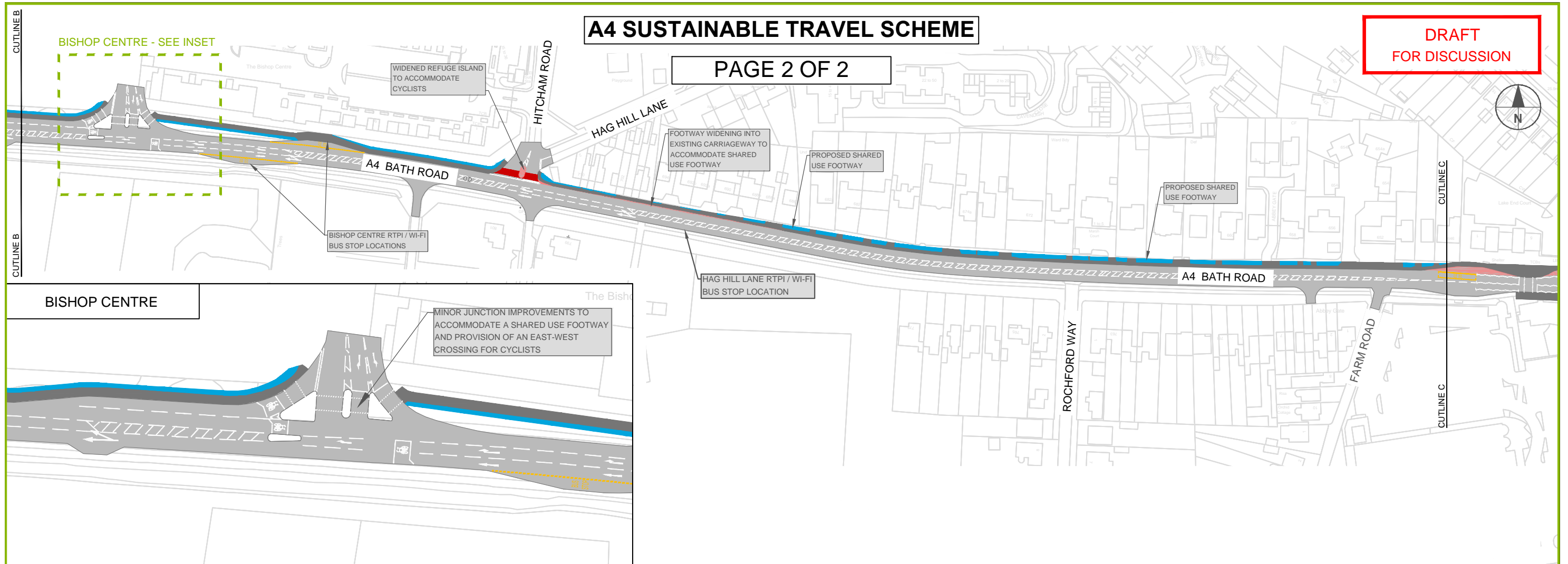
- Summary of additional proposals:**
- Bus stop upgrades with Real Time Passenger Information and Wifi Hotspots
 - Extensive vegetation removal
 - Lighting review
 - Street furniture relocation



A4 SUSTAINABLE TRAVEL SCHEME

PAGE 2 OF 2

DRAFT
FOR DISCUSSION



Key:

- Existing footway
- New footway buildout
- Existing grass verge to be converted to footway to accommodate shared usefootway
- Road markings
- New raised entry feature to provide continuous footway

Summary of additional proposals:

- Bus stop upgrades with Real Time Passenger Information and Wifi Hotspots
- Extensive vegetation removal
- Lighting review
- Street furniture relocation

